
TAKEUCHI[®]
TB2150 Introduction

EXCAVATORS



TB210R



TB216



TB230



TB240

Weight

2,370 lbs (1,075 kg)

3,902 lbs (1,770 kg)

6,607 lbs (2,997 kg)

8,289 lbs (3,760 kg)

HP

11.7 HP (8.7 kW)

15 HP (11.2 kW)

24.4 HP (18.2 kW)

35.8 HP (26.7 kW)

Dig Depth

5 ft 9 in (1,755 mm)

7 ft 10 in (2,390 mm)

9 ft 4 in (2,890 mm)

11 ft 6 in (3,505 mm)

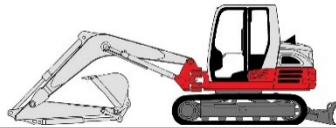
Max Reach

10 ft 9 in (3,285 mm)

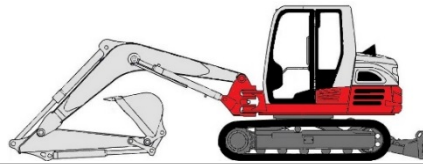
13 ft 5 in (4,090 mm)

16 ft 1 in (4,900 mm)

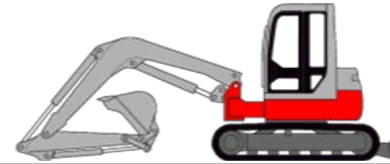
18 ft 5 in (5,612 mm)



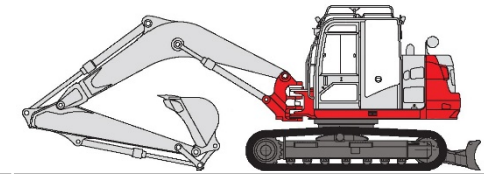
TB260



TB290



TB280FR



TB2150

Weight

12,180 lbs (5,525 kg)

18,780 lbs (8,518 kg)

19,077 lbs (8,653 kg)

34,480 lbs (15,925 kg)

HP

47.6 HP (35.5 kW)

69.2 HP (51.6 kW)

69.2 HP (51.6 kW)

114 HP (85.0 kW)

Dig Depth

12 ft 9 in (3,895 mm)

15 ft 0 in (4,570 mm)

14 ft 11 in (4,545 mm)

17 ft 10.4 in (5,445 mm)

Max Reach

20 ft 6.9 in (6,270 mm)

24 ft 5 in (7,435 mm)

23 ft 7 in (7,195 mm)

28 ft 8.9 in (8,760 mm)

New Key Features:

- Fully Redesigned
- Final Tier 4 Compliant Deutz Turbocharged Engine
- Automotive Styled Interior
- Large Color Multi-Function Monitor
- Takeuchi Fleet Management System (TFM)
- Rear Camera
- Improved Maintenance Access

Why Takeuchi:

- Primary and Secondary Auxiliary Hydraulics Plumbed to Arm
- Deluxe High Back Air Ride Seat
- Standard Long Arm
- Versatility of Boom Swing
- Standard Backfill Blade
- Two Year 2,000 Hour Full Warranty

	Takeuchi TB2150	Case CX130D	CAT 315 FL	CAT 316 FL	JD 130G	JD 135G	Komatsu PC138US-10	Volvo 140E
Weight	34,480 lbs	30,040 lbs	35,170 lbs	38,580 lbs	31,641 lbs	32,819 lbs	31,791 lbs	31,160 lbs
Engine HP	114.0	102.0	100.0	122.0	98.0	97.0	98.0	121.0
Dig Depth	17 ft 10.4 in	19 ft 10 in	19 ft 6 in	21 ft 7 in	19 ft 9 in	19 ft 7 in	19 ft 4 in	19 ft 11 in
Reach	28 ft 8.9 in	28 ft 4 in	28 ft 6 in	30 ft 5 in	28 ft 9 in	29 ft 1 in	28 ft 7 in	29 ft 0"

TB2150 HYDRAULIC EXCAVATOR

WEIGHT	34,480 lbs
HORSEPOWER	114.0
DIG DEPTH	17 ft 10.4 in
REACH	28 ft 8.9 in
BREAKOUT	22,190 lbs
ARM CROWD	14,950 lbs
TRACTION FORCE	32,600 lbs
WIDTH	8ft 6 in

The new TB2150 hydraulic excavator is the largest excavator in the Takeuchi line-up, delivering greater functionality, performance, comfort, and serviceability.

Telematics are now featured on the TB2150 and provide real time machine information that will help control costs and keep downtime to a minimum by being proactive with scheduled maintenance.

The boom configuration is unique and it allows the TB2150 to function like our smaller excavators. Rubber tracks are standard equipment allowing the TB2150 to work on a wide range of surfaces.



Performance & Durability Features

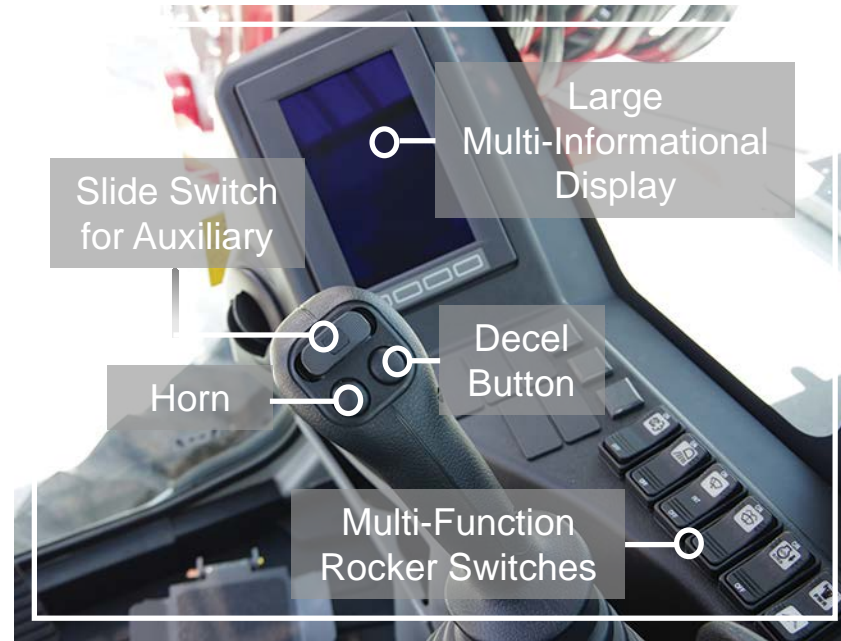
- Engine HP Increase of Over 10%
- Takeuchi Fleet Management (TFM)
- Pilot Operated Joysticks
- Dual Auxiliary Hydraulics
 - Primary 59 gpm (224 L)
 - Secondary 14.5 gpm (55 L)
- Two Speed Travel with Auto Shift
- Backfill Blade with Float
- Pilot Accumulator

Comfort & Convenience Features

- Spacious Cabin
- Automotive Styled Interior
- Deluxe High Back Air Suspension Seat
- Large Color Multi-Informational Display
- Rear Camera
- Automatic Climate Control
- AM / FM Radio with MP3 Auxiliary Port
- Deluxe Work Light Package

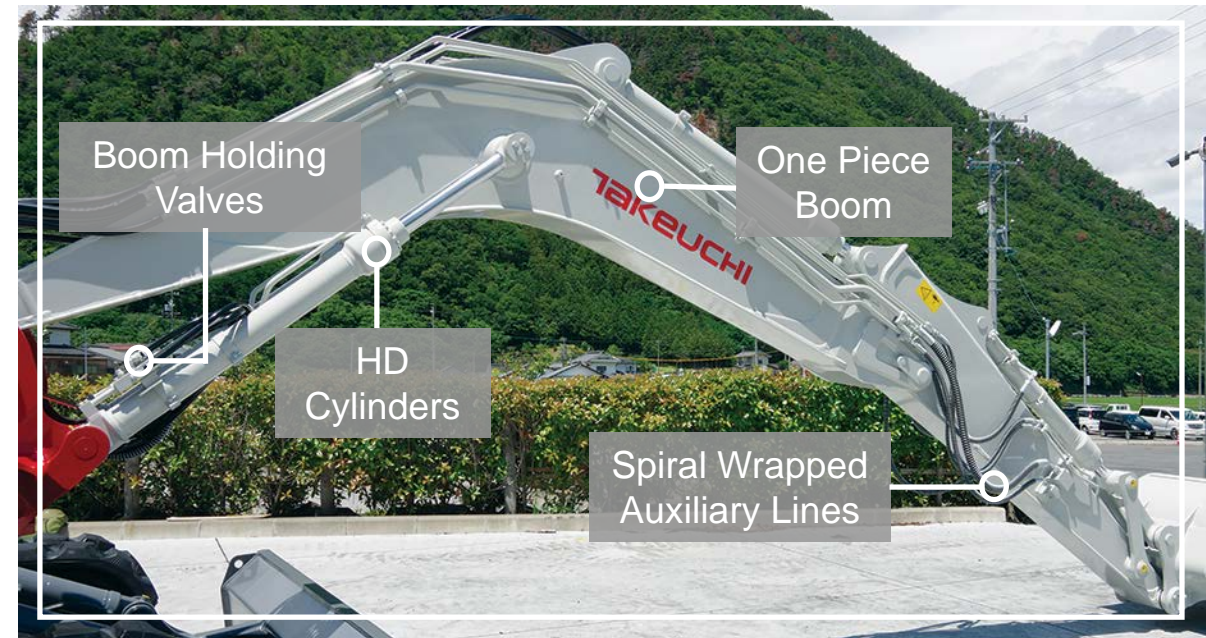
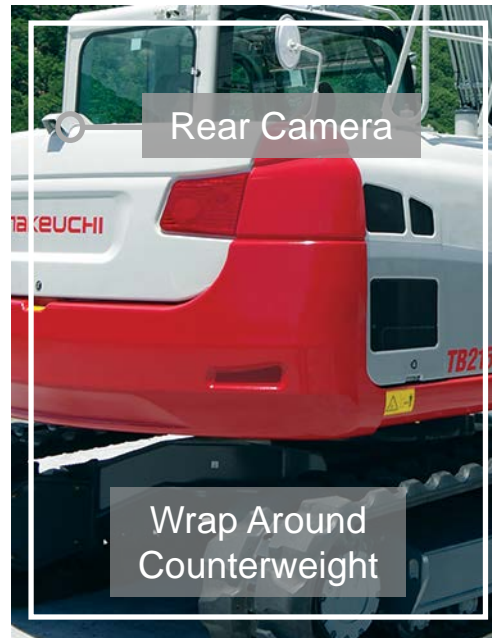
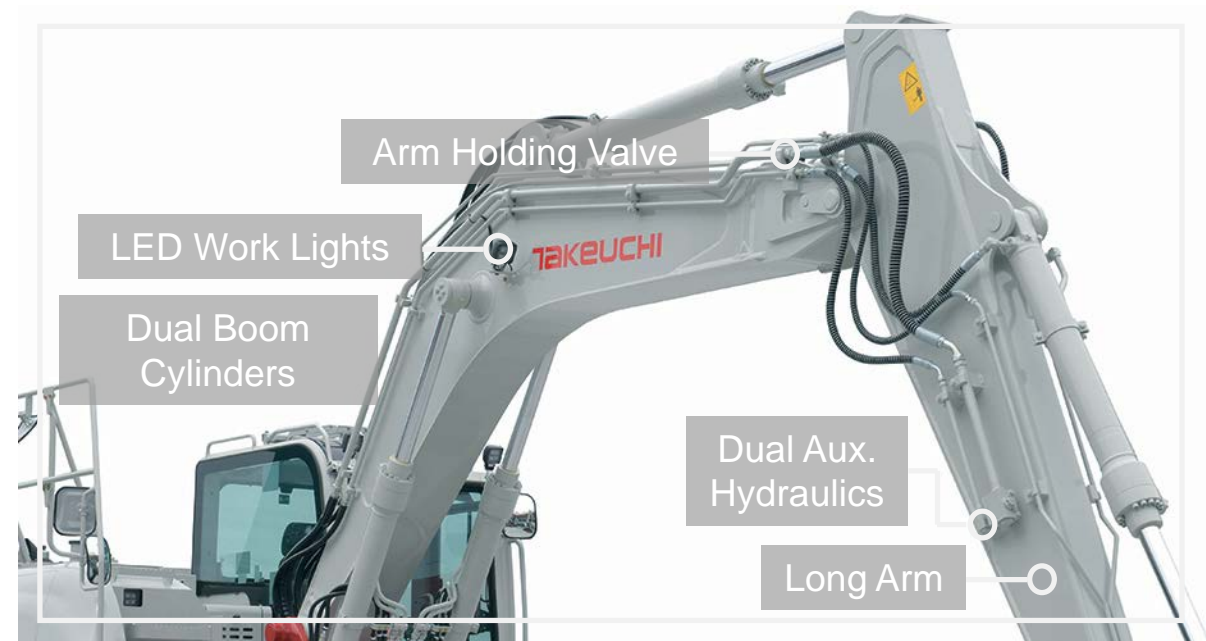
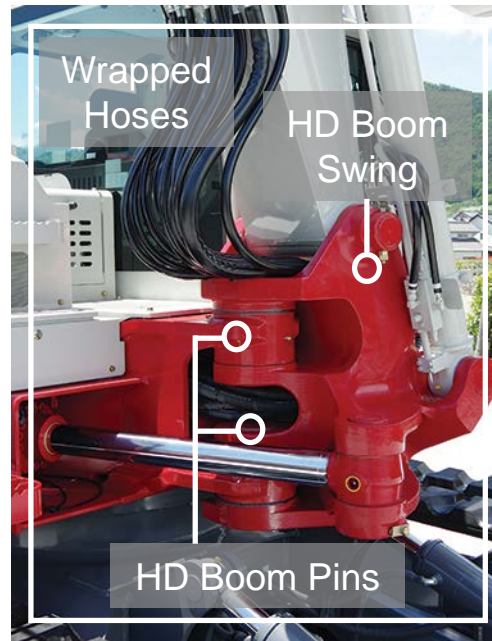
COMFORT and CONVENIENCE

- Large Color Monitor
- Pilot Joystick Controls
- Deluxe High Back Air Suspension Seat with Heat
- Arm Rests
- Multi-Function Rocker Switches
- Automatic Climate Control
- Auto Two-Speed Travel
- Pattern Change Valve



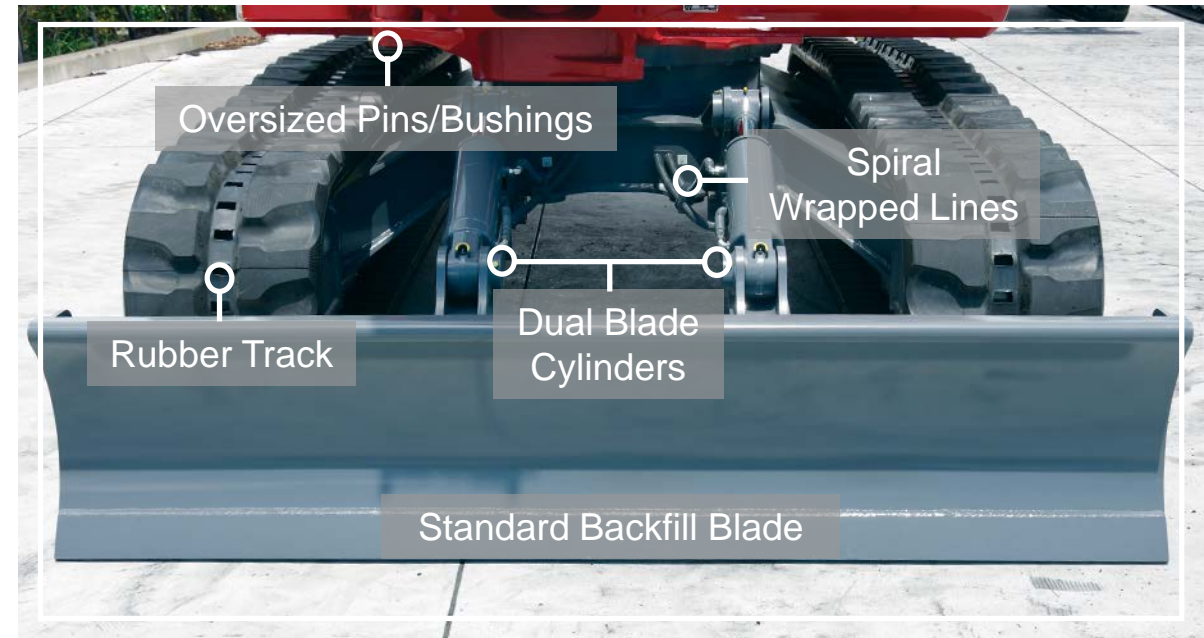
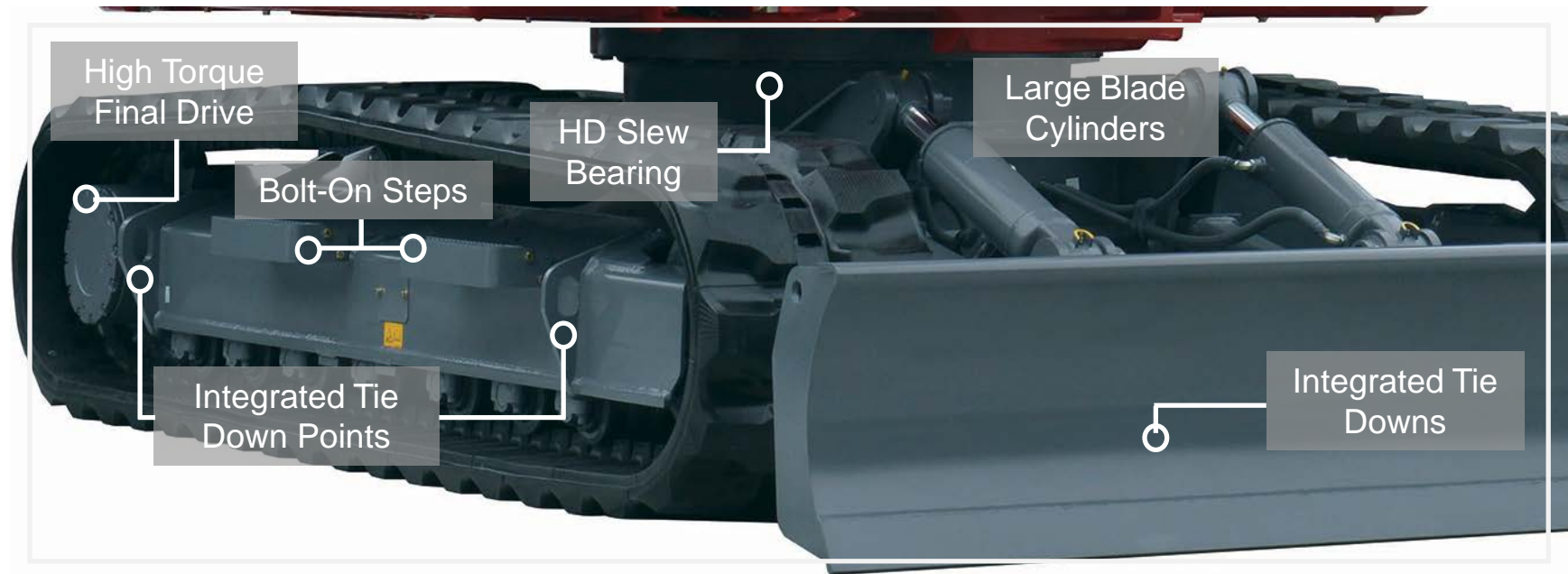
WORK EQUIPMENT

- HD Pivot Boom
 - 75° Left - 55° Right
- Dual Auxiliary Hydraulics
- Boom and Arm Holding Valves
- Standard Long Arm
- LED Work Lights
- Oversized Pins / Bushings
- Dual Boom Cylinders
- Rear Camera
- Large Counterweight



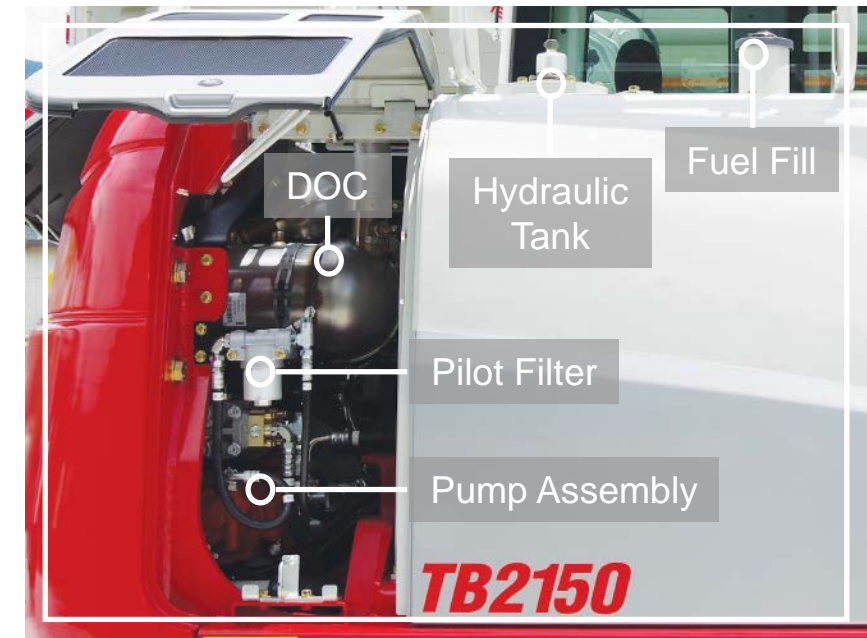
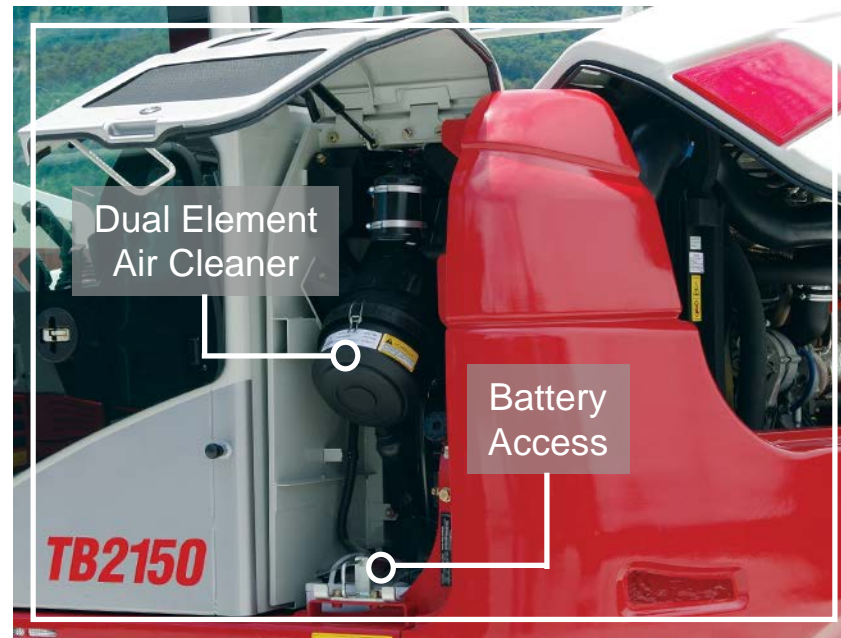
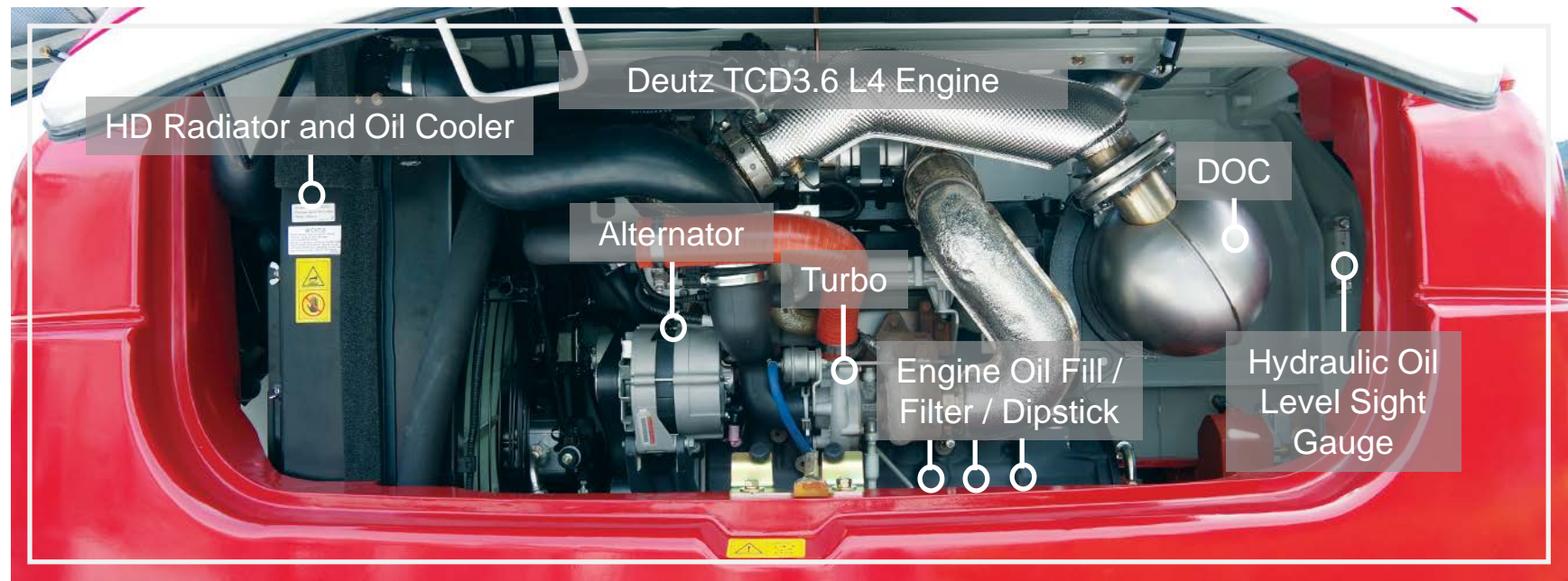
BLADE and TRACKS

- HD Undercarriage
- Standard Backfill Blade
- Dual Blade Cylinders
- Spiral Wrapped Lines
- Triple Flanged Rollers
- Grease Type Track Adjuster
- Heavy Duty Slew Bearing
- Oversized Pins / Bushings
- High Torque Final Drives
- Integrated Tie Downs
- Multiple Track Options



SERVICEABILITY and UPTIME

- Overhead Service Hood for Engine Access
- Final Tier 4 Deutz Engine
- SCR / DOC After Treatment
- Enhanced Serviceability
- High Capacity Cooling Module
- Dual Element Air Cleaner
- Steel Hydraulic Tank with Sight Gauge
- Easy Battery Access





- Improved Design



- Pivot Boom



- Automotive Styled Interior



- Standard Backfill Blade



- New Multi-Information Color Display



- Rear Camera



- Multi-Function Rocker Switches



- HD Wrap Around Counterweight



- Takeuchi Fleet Management (TFM)



- Enhanced Serviceability